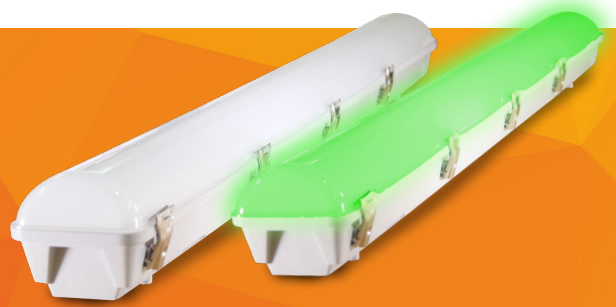


# [ENDURO]

## WEATHERPROOF LED BATTEN



### Description

The [ENDURO] is built with premium-grade materials, making it one of the most durable weatherproof LED battens on the market. The [ENDURO] features a large terminal block, heavy duty stainless steel clips and multiple knockouts for side and rear cable entry to ensure smooth installation.



### Key Features

- High efficiency up to 125lm/W
- Durable polycarbonate body and diffuser with stainless steel clips
- Screw point for optional vandal-proof installation
- GRP, Emergency and sensor options available
- Green (532nm) LED output option available



The [ENDURO]<sup>E</sup> automatically switches to its AS2293-tested emergency function when the mains power supply fails. Featuring over 150 minutes of emergency operation supported by high capacity and long lifetime LiFePo4 batteries. Rated C0 = D100, C90 = D63 across all models.

#### Features:

- 150mins Emergency operation
- Test button for self-test function
- High capacity
- LiFePo4 batteries
- 3 year battery warranty

#### EMERGENCY SPECIFICATION

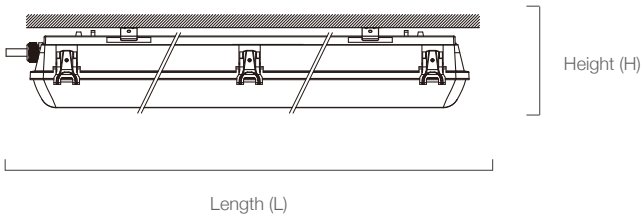
Emergency LED Power	4W
Output Current	32-110mA
Battery Charging Ambient Temp.	-20°C ~ +60°C
Battery Model	LiFePo4 YH11-403



## Technical Specifications

Rated Life	≥50,000 hours	Operating Temperature	-20°C to +45°C (+ 40°C Em)
Body	Polycarbonate	Input Voltage	200-264 VAC ~ 50/60Hz
Installation	Surface mounted, Suspension	IP Rating	IP65
Beam Angle	120°	Connection	Terminal block
Power Factor	>0.95	Net Weight	1.1kg (600mm) (1.3kg Em) 1.9kg (1600mm) (2.2kg Em)
CRI	>83		

## Dimensional Drawing



Wattage	L	H	W
20W	600	108	120
36W	1160	108	120

Unit = mm

## Product Data

Part Number	Power	Lumen Output	CCT
BE-2-20C120	20W	2500lm	4000K
BE-2-20D120	20W	2600lm	5700K
BE-4-36C120	36W	4400lm	4000K
BE-4-36D120	36W	4400lm	5700K
BE-2-20G120	20W	Indicaion	Green (532nm)
BE-4-36G120	36W	Indication	Green (532nm)

Sensor option available, add '-S' to model code.  
Emergency option available, add '-E' to model code.  
Dimmable option available, add '-D' to model code.  
GRP option available, add '-P' to model code  
eg. BE-4-36D120-EPSP (Emergency, GRP, Sensor, Dimmable)

## GRP Specifications

Body	GRP
Diffuser	Polycarbonate
IK Rating	IK10
IP Rating	IP65
Weight	1.6kg (600mm) 3.0kg (1200mm)

## Sensor Settings

Note: Default factory settings are in bold

Sensitivity Shift	<b>25%</b> / 50% / 75% / 100%
Hold Time	5s / <b>90s</b> / 5min / 25min
Daylight Sensor	10 lux / 30 lux / <b>50 lux</b> / 100 lux / Disable
Stand-by Period	1min / 5min / 25min / <b>+ ∞</b>
Stand-by Brightness	0% / <b>10%</b> / 25% / 50%